

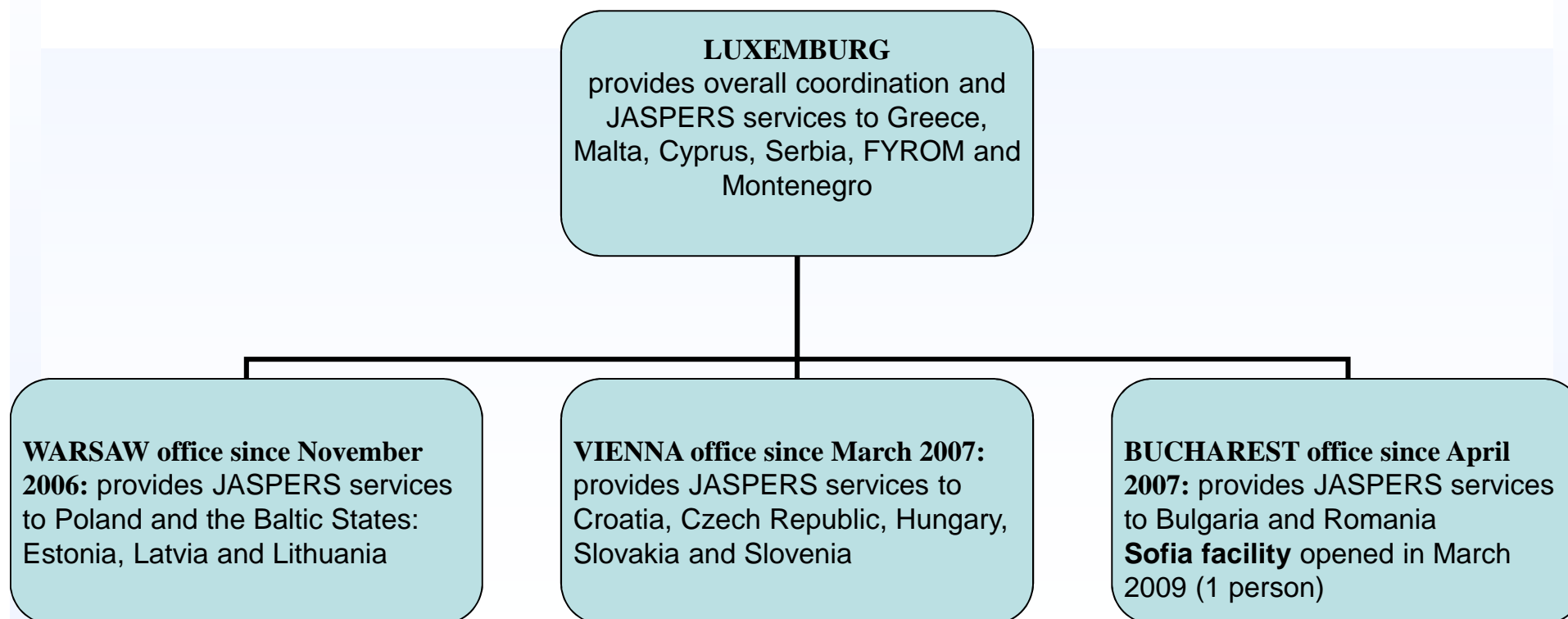
# Joint Assistance to Support Projects in European Regions

29-30 May 2013

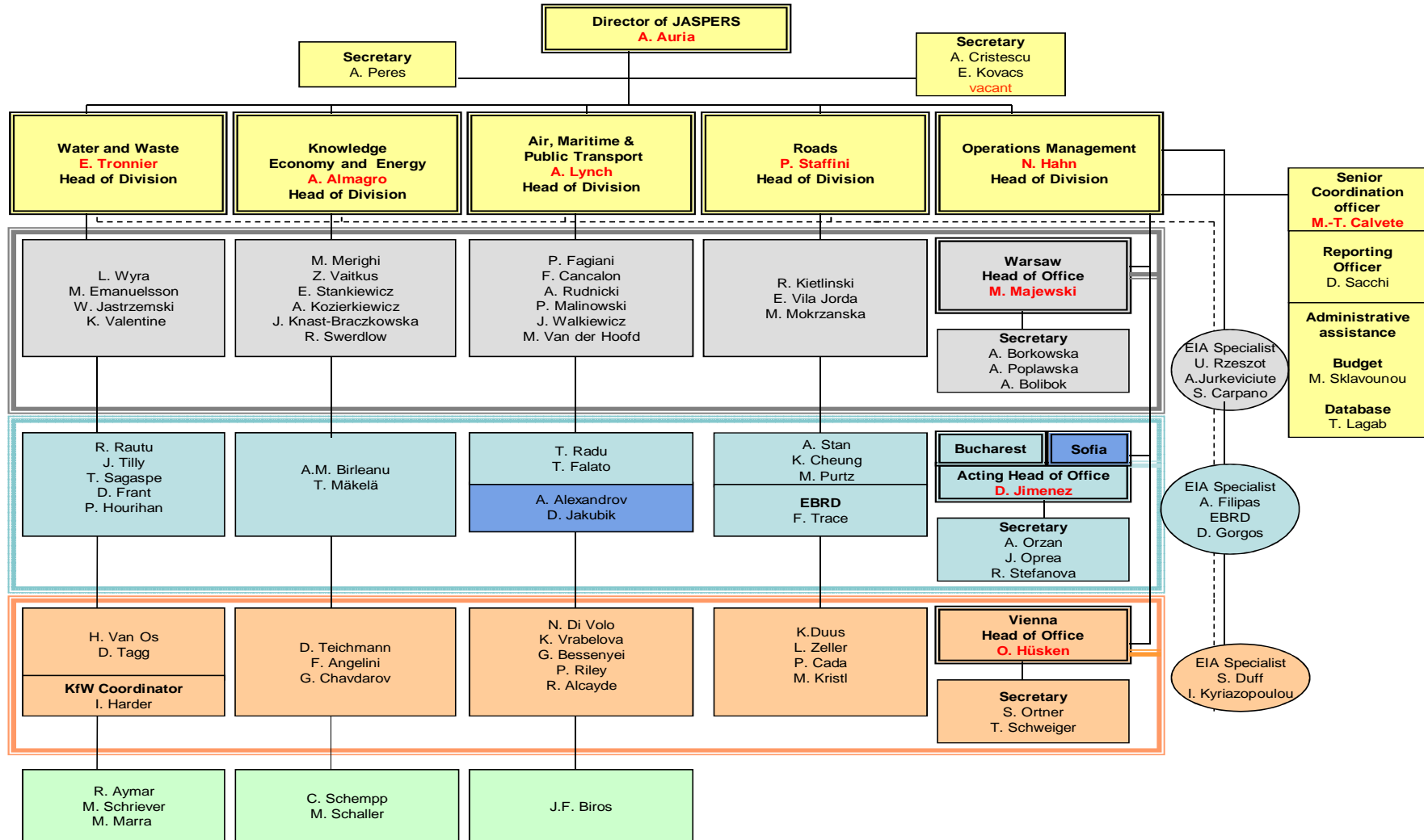
- ❖ Joint assistance launched at the end of 2005 to support European Cohesion Policy (Structural and Cohesion Funds 2007-2013).
- ❖ Free technical assistance partnership managed by the EIB and co-sponsored by the European Commission (DG REGIO), the European Bank for Reconstruction and Development (EBRD) and KfW Bankengruppe (KfW) for the preparation of EU grant funded projects.
- ❖ Acting in «EU12» (the 12 countries that joined the EU between 2004 and 2007) and Croatia since 2011 – anticipating its accession to the EU on 01.07.2013. Also started working in Western Balkans and Greece in 2013.
- ❖ Mainly support of major projects financed by cohesion fund and European Regional Development Fund (> 50m€ total costs).

## JASPERS structure

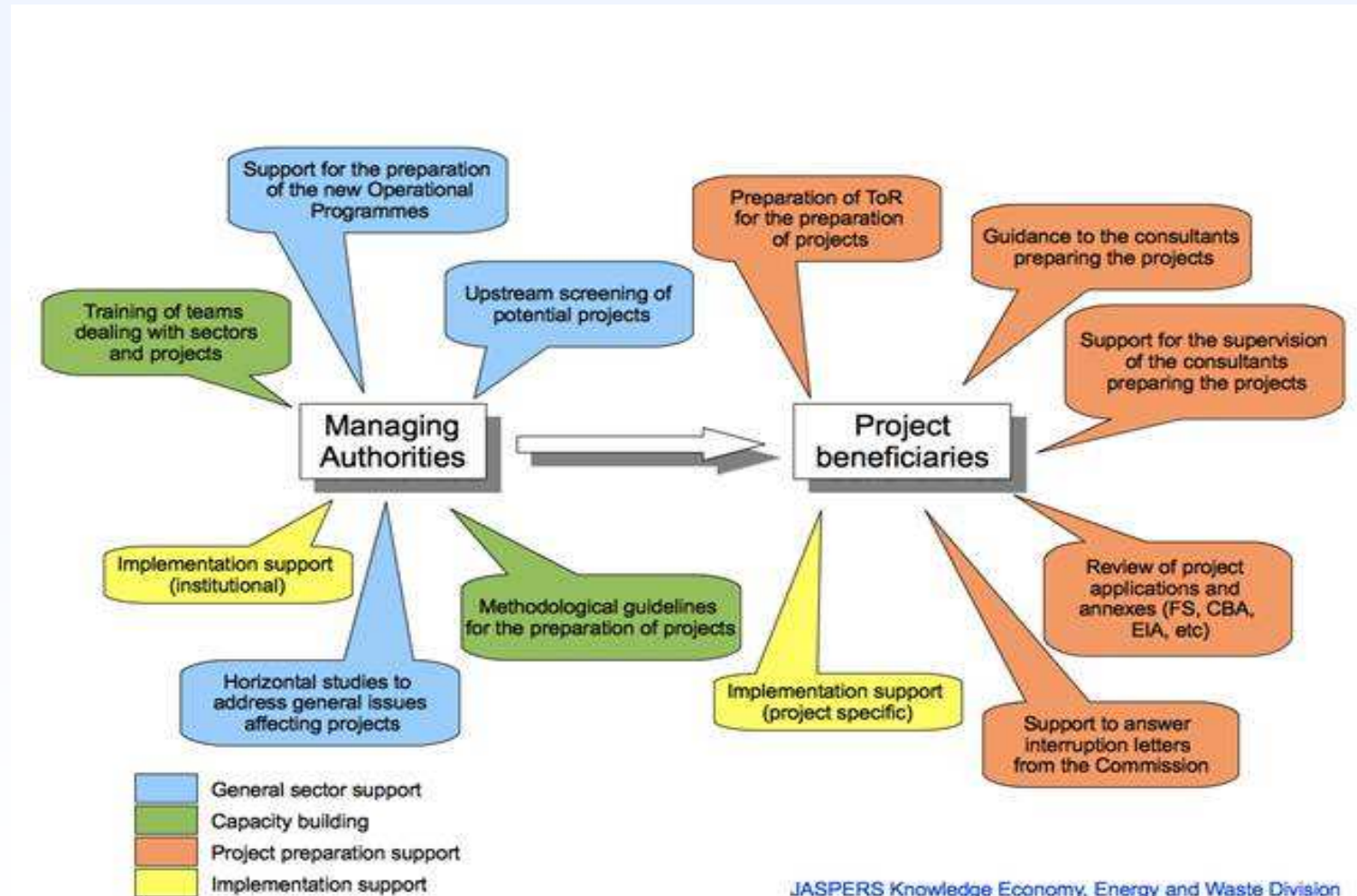
- JASPERS is managed by a Steering Committee with representatives from DG REGIO, EIB, EBRD and KfW



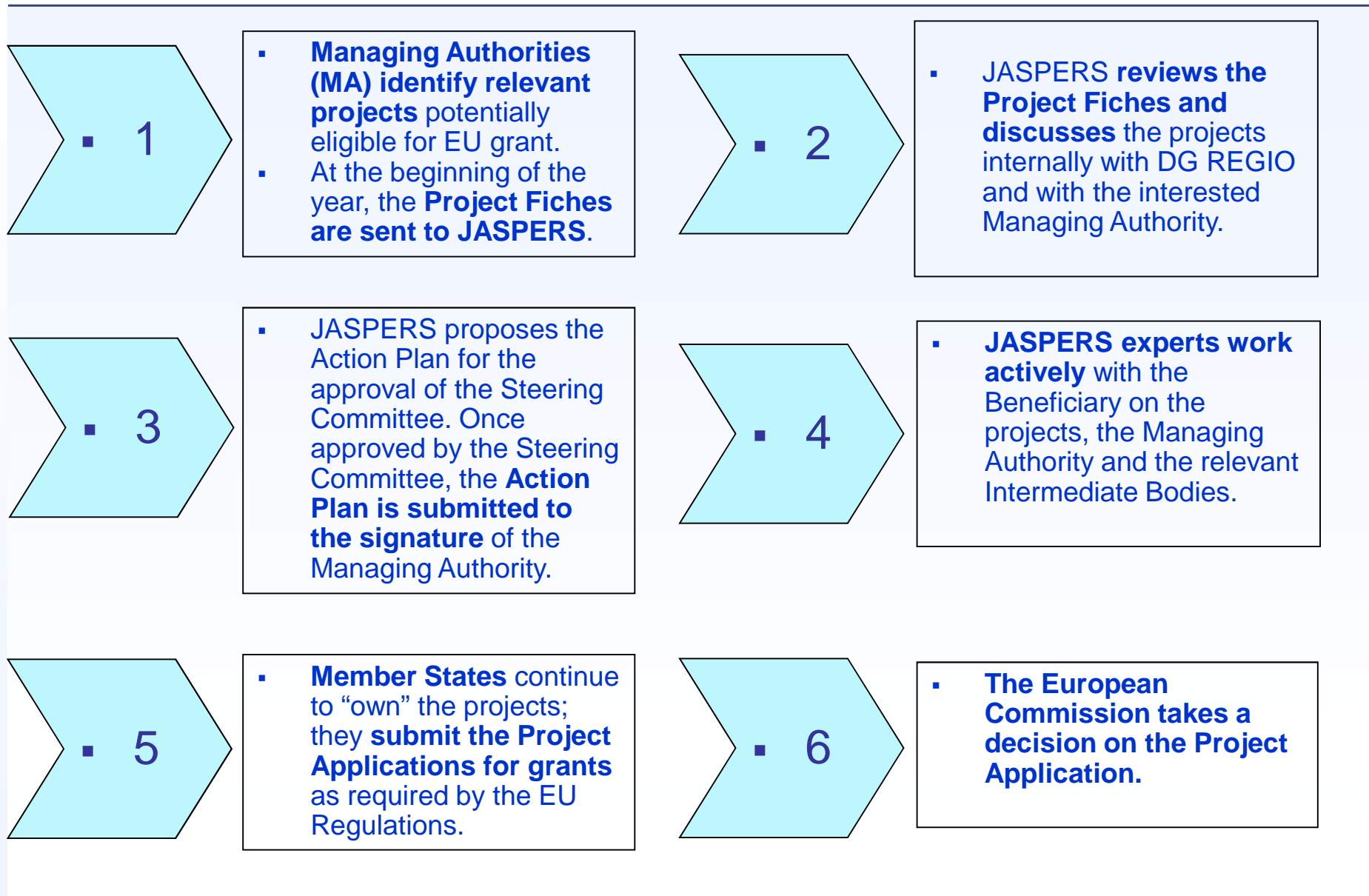
# JASPERS Organigramme



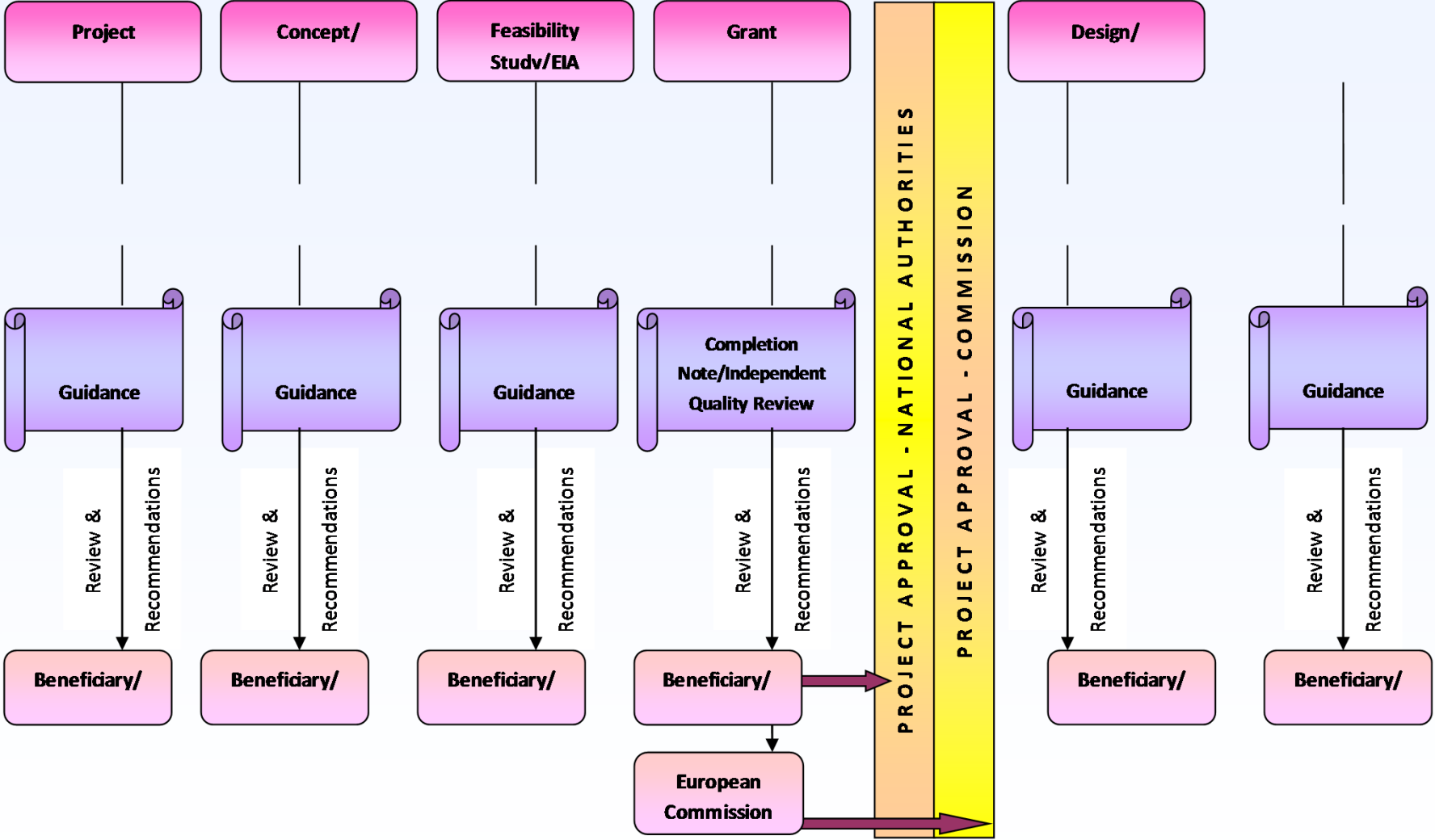
# JASPERS' Support Services



# JASPERS Project Cycle



# JASPERS Independent review in the project cycle



The Action Completion Note covers the following:

- the project background and justification
- the project description and components
- JASPERS' input during the project preparation
- the result of the technical environmental and economic/financial evaluation and main issues that JASPERS has focused on and discussed with the beneficiary
- the final JASPERS opinion on the project and related documentation



# Some figures

- As at 7 May 2013:
- 683 assignments completed since start of operations (2006)
- JASPERS working on 527 assignments
- 334 JASPERS-supported applications for **major projects** submitted to the EU Commission, of which 252 approved
- Around 60bn €

# JASPERS

**100, boulevard Konrad Adenauer**

**L-2950 Luxembourg**

**Email: [jaspers@eib.org](mailto:jaspers@eib.org)**

**Tel: + 352 4379-1**

**[www.jaspers-europa-info.org](http://www.jaspers-europa-info.org)**